

ARKIWORK

Aluminium Door System



XLine 70

Insulated Aluminium Entrance Doors

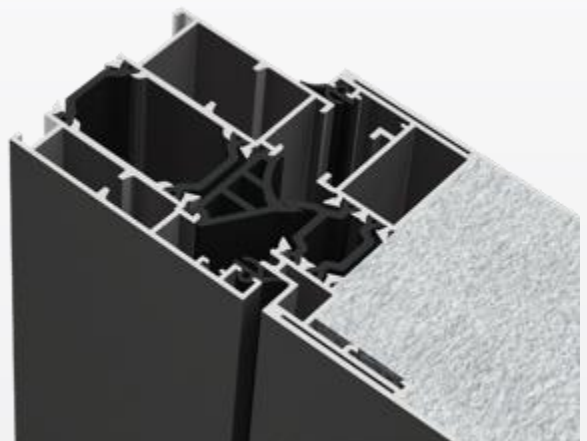
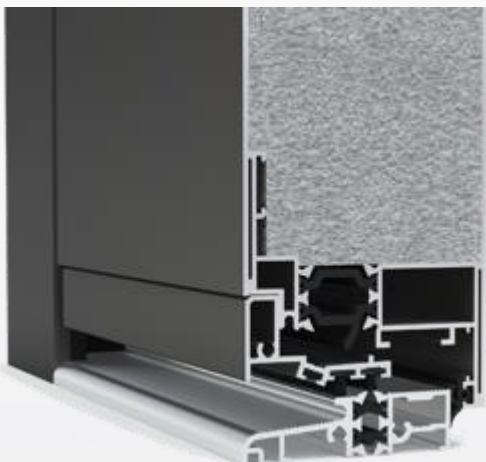
A fundamental feature of **XLine 70** is the high efficiency in the area of thermal insulation achieved with the use of high quality certified raw materials as well as the designing of the door system, not to mention the flush aluminum panels.

THERMAL
TRANSMITTANCE FROM

1,1
W/(m²K)

STANDARD EQUIPMENT

- ▶ Flat surface on the outside
 - ▶ Panel levels inside and out
 - ▶ Three glasses for improved thermal insulation
 - ▶ 3 + 3mm Triplex glasses inside and out
 - ▶ Aluminum sheet: 1.5mm outside / 1.5mm inside
 - ▶ Door thickness: 70 mm
 - ▶ Three rubber seals
-
- ▶ Standard single wing gate dimensions: 2300 x 1080 mm (height x width)
 - ▶ Maximum single wing gate dimensions: 2500 x 1150 mm (height x width)
 - ▶ Inner side flat without engraving or INOX with glasspane opening where applicable
 - ▶ Optional designs for the inner side panel





X-22

Colour Gris 2400 Sable YW373F

Satinato Glasspane

Handle E392

INOX 316 Trimmings



X-20

Colour Pyrite 2525 YW207F

Satinato Glasspane

Handle E392

INOX 316 Trimmings

X-30-1

Colour RAL 7016

Handle E3030

Satinato Glasspane





X-27

Colour Gris 2900 Sable YW355F
Satinato Glasspanes

Handle E3570
INOX 316 Trimmings



X-31

Colour RAL 9016 Structura YA316F

Satinato Glasspane

Handle E3560



X-50

Colour Blue 2600 Sable YW361F

Satinato Glasspane

Handle E413

INOX 316 Trimmings





X-18

Colour Gris 2400 Sable YW373F

Handle E3100

INOX 316 Trimmings



X-24

Colour Gris 2900 Sable YW355F

Satinato Glasspane

Handle E3560

INOX 316 Trimmings



X-15

Colour Blue 2700 YW353F

Handle E392

INOX 316 Trimmings



X-43

Colour RAL 3002

Satinato Glasspane

Handle E416

INOX 316 Trimmings



X-10

Colour Gris 2900 Sable YW355F
Handle E392



X-37

Colour Vert 2500 Sable YW354F
Handle E392



X-13

Colour RAL 9016
Satinato Glasspane

Handle E392



X-21

Colour Gold Pear YY217E
Satinato Glasspane

Handle E392
INOX 316 Trimmings



X-48

Colour RAL 7034
Satinato Glasspane
Handle E416



X-25-1

Colour Platine 2525 YW284F
Handle E392
INOX 316 Trimmings

X-120

Colour RAL 9016

Handle E3560

Satinato Glasspane





X-54

Colour RAL7016

Satinato Glasspane

Handle E3560

INOX 316 Trimmings



X-53

Colour RAL5004

Handle E392



X-29

Colour Gris 2900 Sable YW355F

Handle E392

INOX 316 Trimmings



X-39

Colour Gold Pear YY217E

Handle E392



X-54-1

Colour RAL 7016

Satinato Glasspane

Handle E3560

INOX 316 Trimmings



X-40

Colour RAL 5003

Handle E392

INOX 316 Trimmings



X-23

Colour RAL7016

Satinato Glasspane

Handle E3570

INOX 316 Trimmings



X-49

Colour RAL7015

Satinato Glasspane

Handle E416

INOX 316 Trimmings



X-16

Colour RAL3004

Handle E3100

INOX 316 Trimmings



X-41

Colour RAL 7034

Satinato Glasspane

Handle E416



X-36

Colour Gris 2400 Sable YW373F

Satinato Glasspane

Handle E386



X-44

Colour Blue 2700 YW353F

Satinato Glasspane

Handle E3540

INOX 316 Trimmings



X-42

Colour Platine 2525 YW284F

Handle E381



X-47

Colour Blue 2700 YW353F

Satinato Glasspane

Handle E416

INOX 316 Trimmings



X-14

Colour Gris 2400 Sable YW373F

Satinato Glasspane

Handle E3100



X-32

Colour Pyrite 2525 YW207F

Satinato Glasspane

Handle E3570



X10-1

Colour RAL 7016

Satinato Glasspane

Hidden Handle 1600mm



X-123

Colour RAL 9016

Satinato Glasspane

Handle E3560



X-22-1

Colour RAL 7016

Handle E3560

INOX 316 Trimmings

Satinato Glasspane with lines



X-38

Colour RAL 9016

Extra Colour Golden Oak B2425

Satinato Glasspanes

Handle E386



X-11

Colour Gris 2400 Sable YW373F

Handle E3100



X-26

Colour RAL7015

Satinato Glasspane

Handle E3560



X-17

Colour GRIS 2900 Sable YW355F

Handle E3030

INOX 316 Trimmings



X-19

Colour RAL 9016

Handle E3030

INOX 316 Trimmings

X-24

Colour RAL 9016

Handle E3560

Satinato Glasspane



X-34

Colour Blue 2600 Sable YW361F

Satinato Glasspane

Handle E392

INOX 316 Trimmings



X-35

Colour Pyrite 2525 YW207F

Satinato Glasspane

Handle E3560

X-28

Colour Gris 2900 Sable YW355F

Satinato Glasspane

Handle E392



X-33

Colour Gris 2400 Sable YW373F

Satinato Glasspane

Handle E3570



X-30-3

Colour Gris 2150 Sable

Handle E3560

Satinato Glasspane



X-45 | X-45S

Colour Vert 2500 Sable YW354F

Satinato Glasspane

Handle E3410

Classic Decoration



X-51 | X-51S

Colour Gris 2700 Sable YW382I

Handle E3410



X-46

Colour RAL 3002
Satinato Glasspane
Handle E3410
Classic Decoration

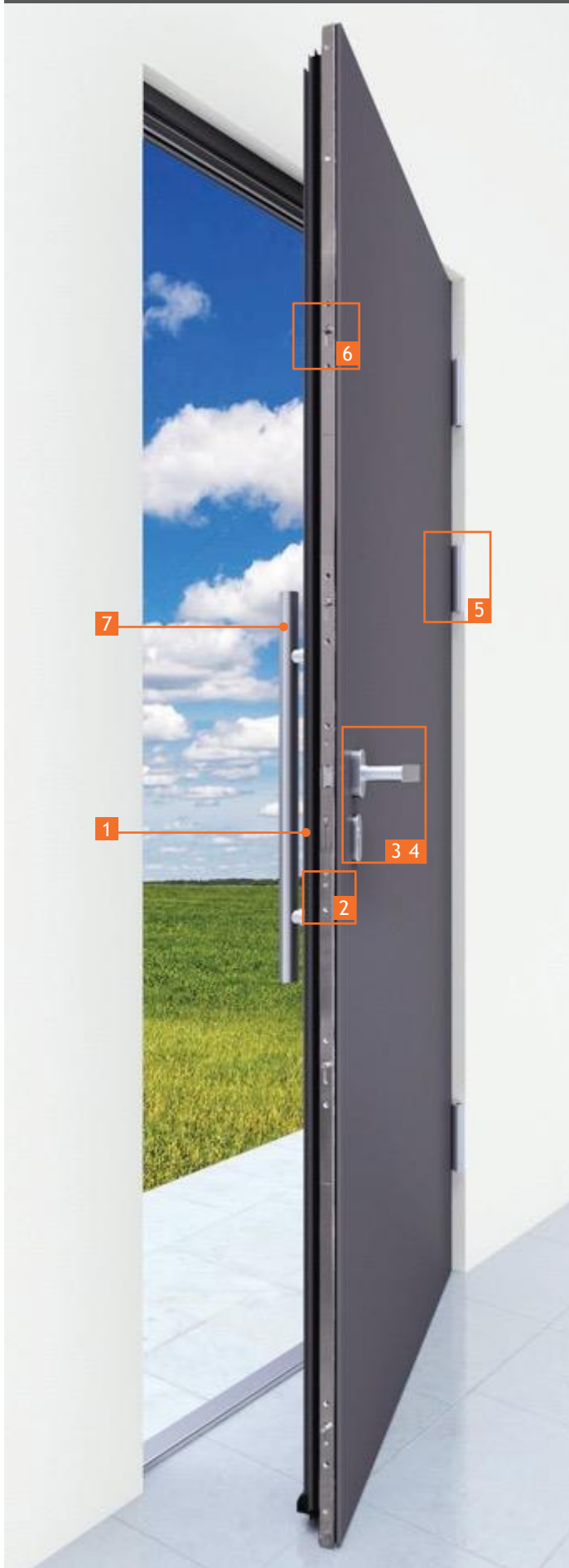


X-52

Colour RAL 9016
Handle E3410
Classic Decoration



STANDARD EQUIPMENT



1

E633
Inner round security
INOX rosette

2

E583
3 Keys BKS Cylinder

3 4

E625 | E635
INOX Handle and rosette

6

E611
4 points GU Lock

5

E643
25 mm diameter Fapim
cylindrical hinge

7 E3020
Standard selection of external handle | 500 mm

**STANDARD
SIZE**
2300 x 1080mm

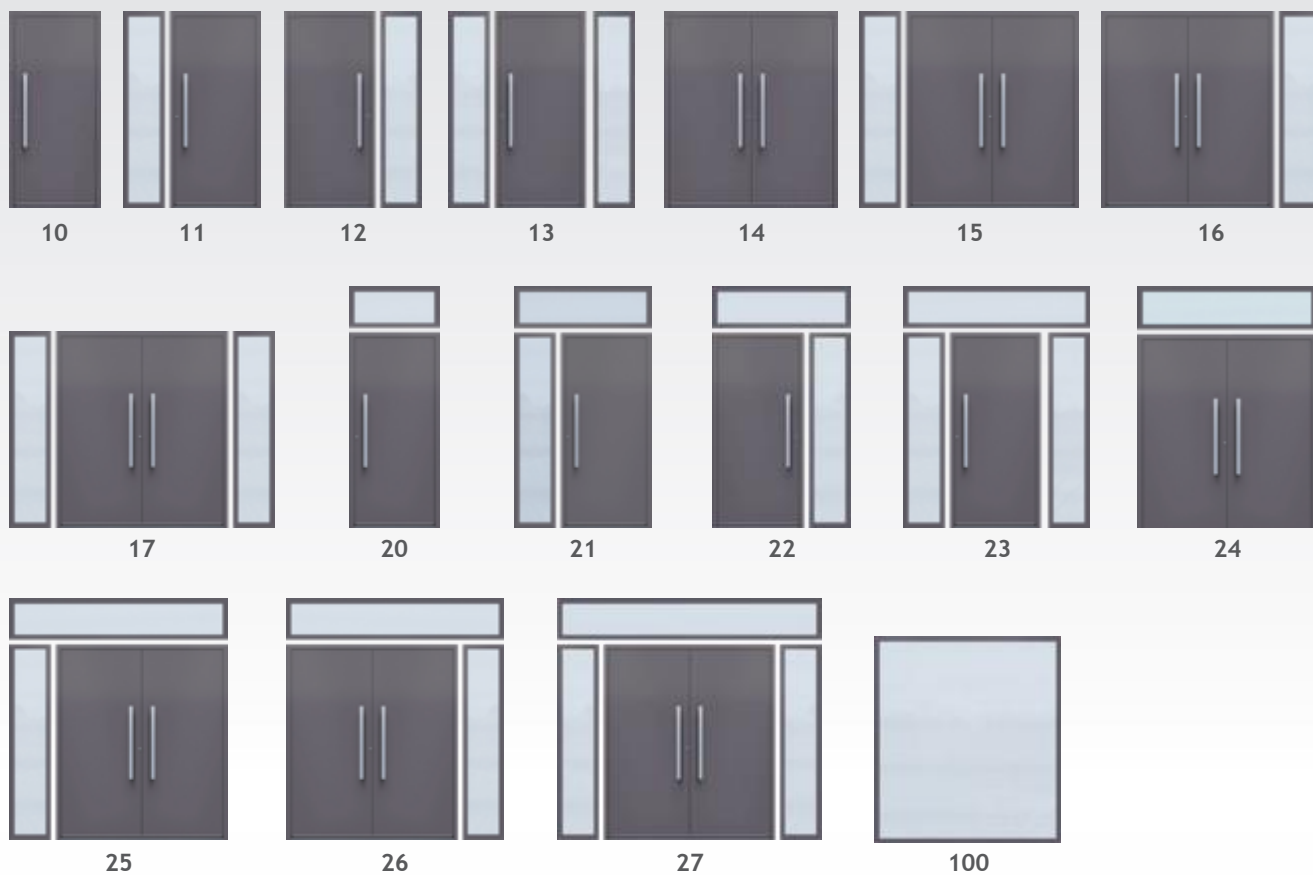
**MAXIMUM
SIZE**
2500 x 1150 mm



TYPE OF FENESTRAL

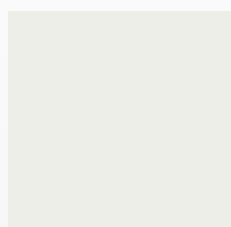
Select your desired type of Fenestral and fill in the corresponding box on the door order form. In double wing fenestrals you will be asked to select which wing opens first.

We always look from the exterior

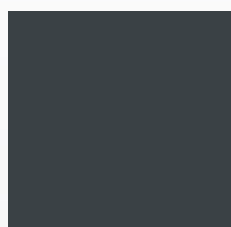


COLOURS

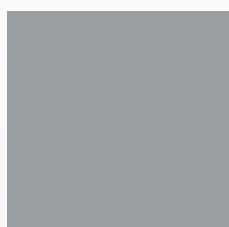
COLOURS RAL STRUCTURA



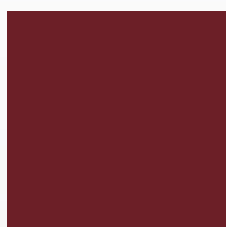
RAL 9016 Structura YA316F



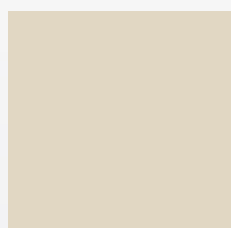
RAL 7016 Structura YL316F



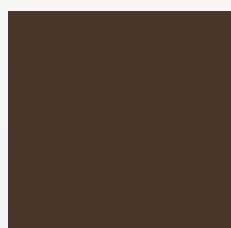
RAL 7040 Structura YL340F



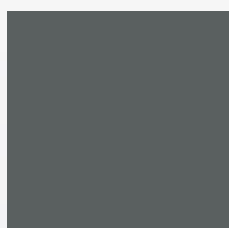
RAL 3004 Structura YG304F



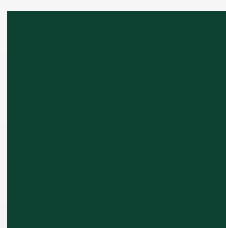
RAL 1013 Structura YD313F



RAL 8014 Structura YM314F



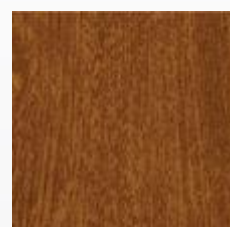
RAL 7012 Structura YL312F



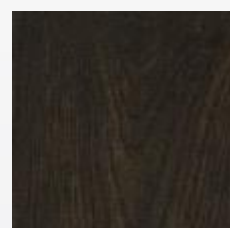
RAL 6005 Structura YK305F

Interpon.
powder coatings
EVERY COLOR IS GREEN

WOOD COLOURS



Golden Oak B2425

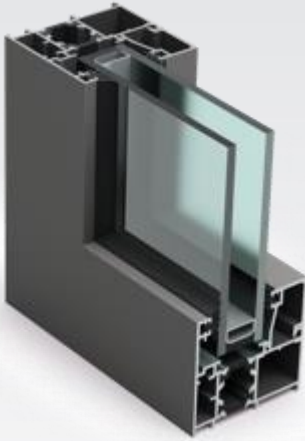


Nussbaum B1523

Variations in colours are possible due to the technical printing processes.

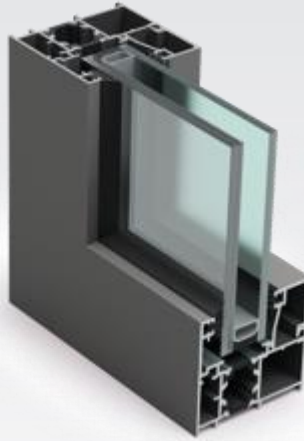
CLASS PANE TYPE FOR FIXTURES AND SKYLIGHTS

Select the desired type of glass pane when your door has side fixture or skylight and fill in the code number in the corresponding box on the **XLine 70 GS** door order form. Select between double-glazed glass panes 4 mm or 6 mm (3+3) triplex. Select also whether the glass panes will be transparent (interior visible) or sand blast (interior invisible).



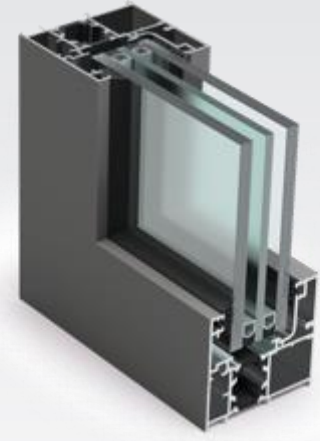
G30-G34 thickness: 22mm

4mm	4mm
G30 Transparent	Transparent
G31 Transparent	Satinato
G32 Energy efficient	Transparent
G33 Energy efficient	Energy efficient
G34 Energy efficient	Satinato



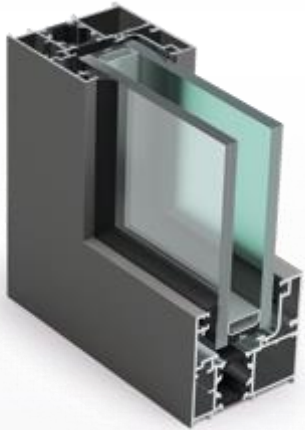
G35-G37 thickness: 22mm

Triplex 3+3 mm	4 mm
G35 Transparent	Transparent
G36 Transparent	Energy efficient
G37 Transparent	Satinato



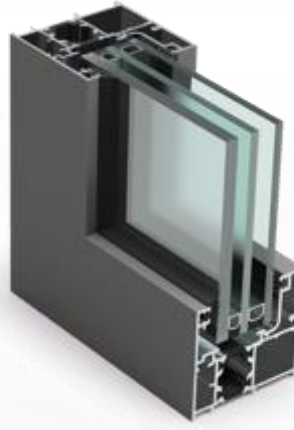
G38-G40 thickness: 28mm

Triplex 3+3 mm	4 mm	Triplex 3+3 mm
G38 Transparent	Transparent	Transparent
G39 Satinato	Transparent	Satinato
* G40 Transparent	Satinato	Transparent



G41-G42 thickness: 28mm

Triplex 3+3 mm	Triplex 3+3 mm
G41 Transparent	Transparent
G42 Transparent	Satinato

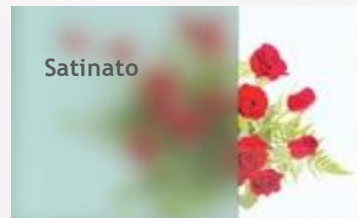


G43-G46 thickness: 28mm

Triplex 3+3 mm	4 mm	4 mm
G43 Transparent	Transparent	Transparent
G44 Transparent	Transparent	Energy efficient
G45 Transparent	Satinato	Transparent
G46 Transparent	Satinato	Energy efficient

* The same type of glass pane is also used in panels. We recommend selecting the same type of glass pane in panels as well as in fixtures or skylights to provide from common glass pane colour shade.

GLASS PANES



HANDLES



INOX BLADE WITH FINGERPRINT

E409 | 1000mm



INOX 316 Q 30 VERTICAL SUPPORT 90°

E3020 | 500mm
E3540 | 600mm
E3030 | 800mm
E3550 | 1000mm
E3100 | 1200mm
E3560 | 1400mm
E3570 | 1600mm
E3580 | 1800mm



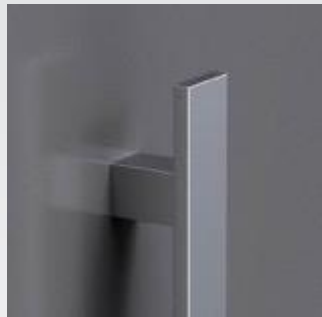
INOX BLADE 10X50mm

E410 | 400mm
E411 | 500mm
E412 | 600mm
E413 | 800mm
E414 | 1000mm
E415 | 1200mm
E416 | 1400mm
E417 | 1600mm
E418 | 1800mm
E419 | 2000mm



INOX 316 Q 30 SUPPORT 45°

E380 | 500mm
E381 | 600mm
E382 | 800mm
E383 | 1000mm
E384 | 1200mm
E385 | 1400mm
E386 | 1600mm
E387 | 1800mm



**ANODINE ALUMINUM
HANDLE 40X10mm**

- E390 | 500mm
- E391 | 600mm
- E392 | 800mm



**ANODINE ALUMINUM
HANDLE 40X10mm**

- E395 | 500mm
- E396 | 600mm
- E397 | 800mm

CLASSIC HANDLES



E3400 | 300mm



E3410 | 300mm



E3420 | 300mm

PROTECTIVE INOX



E502 | 120mm



E503 | 120mm

INOX NUMBERS



E551 | 80mm

XLine 70

Arkiwork's expanded variety of panels allows you to choose the ultimate style for your own space. From the linear flat design to the modern aesthetics, from the simple texture to the inox decoration and glazing of the corresponding specifications, you have the ability to synthesize a great result, which gives prestige to the overall image and high aesthetics in the final result of the system.



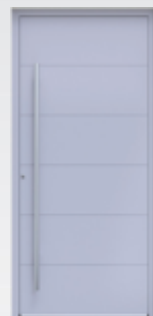
X-10 p.10



X-10-1 p.20



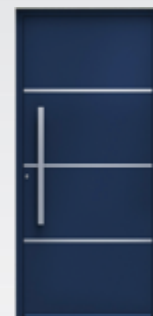
X-11 p.23



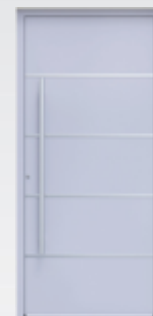
X-13 p.10



X-14 p.19



X-15 p.9



X-16 p.16



X-17 p.23



X-18 p.8



X-19 p.23



X-20 p.4



X-21 p.10



X-22 p.4



X-22-1 p.4



X-23 p.15



X-24 p.24



X-25-1 p.11



X-26 p.23



X-27 p.6



X-28 p.25



X-29 p.14



X-30-1 p.5



X-30-3 p.25



X-31 p.7



X-32 p.19



X-33 p.25



X-34 p.24



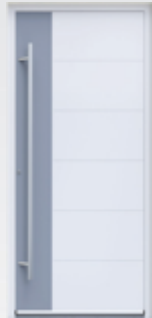
X-35 p.24



X-36 p.17



X-37 p.10



X-38 p.22



X-39 p.14



X-40 p.14



X-41 p.16



X-42 p.18



X-43 p.9



X-44 p.17



X-45 p.26



X-46 p.27



X-47 p.18



X-48 p.11



X-49 p.15



X-50 p.7



X-51 p.26



X-52 p.27



X-53 p.13



X-54 p.13



X-54-1 p.14



X-120 p.12



X-123 p.20

Visit Our Website

You can easily and quickly access detailed information about all our products, technical documentation and certificates on our new website.

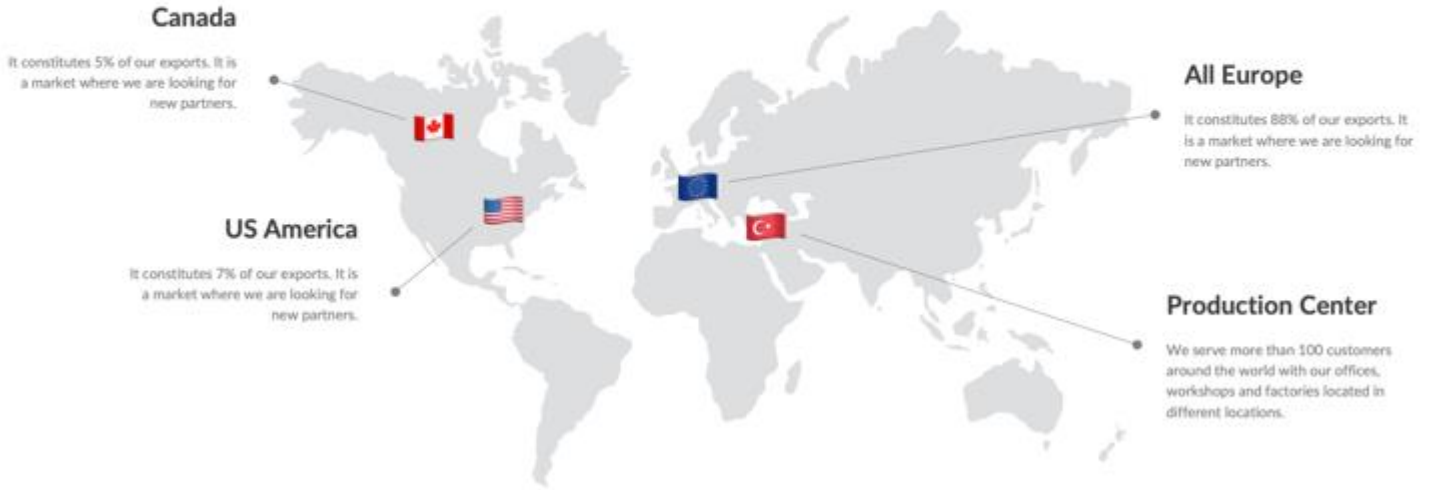
[discover](#)



Get in touch !

Export Regions & Our Center

"We have established hundreds of solid relationships in dozens of countries on five continents."



Exporter and Producer Company
Ark Cam Pvc Metal San. Ve Tic. Ltd. Şti.

Yavuz Selim Mah. Mehmet Akif Blv. 1.Giriş Blok
No:136C, 34203 İstanbul Turkey
T: +90 530 026 10 12
info@arkiwork.com

Importer and Marketing Company
Arkiwork GmbH

Maarweg 84, 50933 Köln Germany
T: +90 530 026 10 12
kontakt@arkiwork.de
www.arkiwork.de

ARKIWORK